



MONTHLY MEMBERSHIP PROGRESS REPORT

District 322 E

Results as of: 09/30/2017

GMT: SWADESH RANJAN SAHA

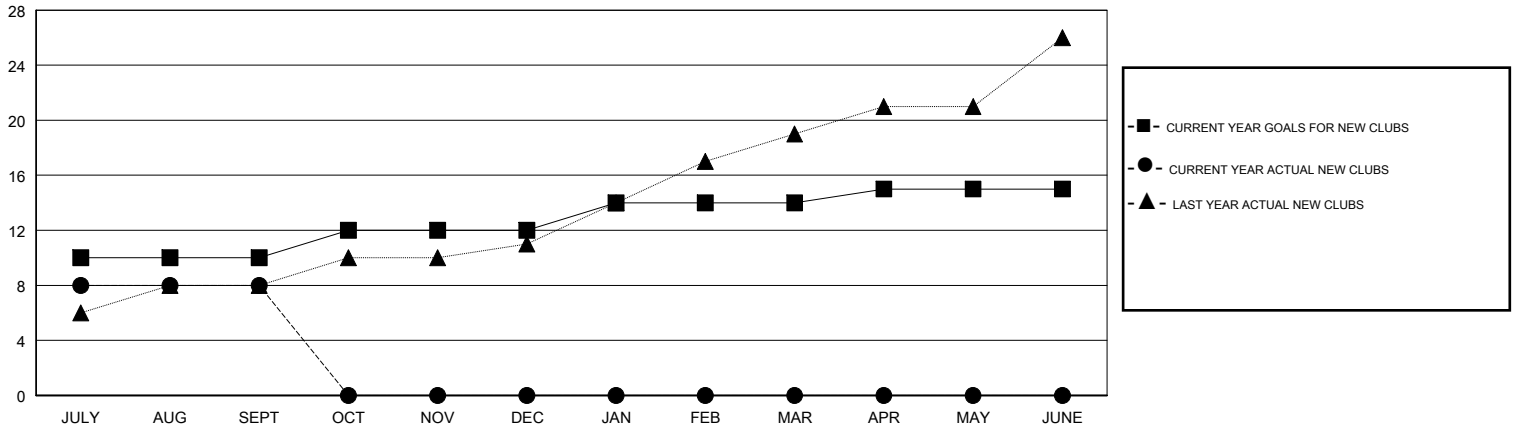
LOCATION INDIA

GMT CA

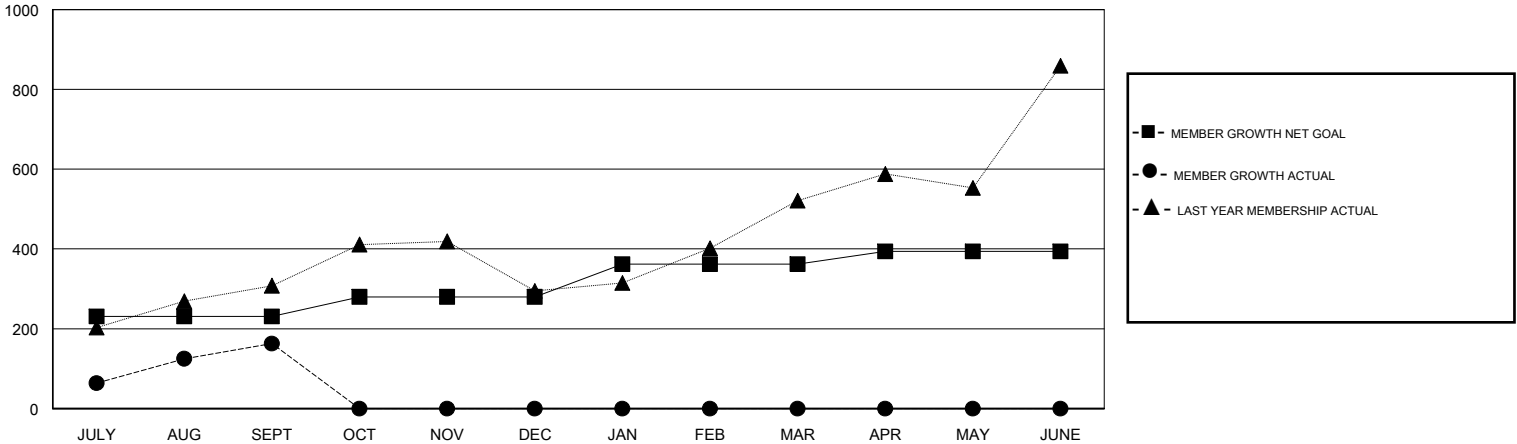
Clubs			
RESULTS FOR 2017-2018			
QUARTER	NEW CLUB GOAL	NEW CLUBS	DROPPED CLUBS
JULY/AUG/SEPT	10	8	1
OCT/NOV/DEC	2	0	0
JAN/FEB/MAR	2	0	0
APR/MAY/JUNE	1	0	0

Members			
RESULTS FOR 2017-2018			
QUARTER	MEMBER GROWTH NET GOAL	MEMBER GROWTH ACTUAL	DROPPED MEMBERS ACTUAL (including transfers)
JULY/AUG/SEPT	231	360	197
OCT/NOV/DEC	49	0	0
JAN/FEB/MAR	82	0	0
APR/MAY/JUNE	32	0	0

GOALS AND ACTUAL NEW CLUBS CUMULATIVE



GOALS AND ACTUAL MEMBERS CUMULATIVE



DROPPED CLUBS: 1

37 CLUBS OF 124 ADDED 1 OR MORE NEW MEMBERS

GENDER DISTRIBUTION	
MALE	2,668 (68.22%)
FEMALE	1,243 (31.78%)
Women Percentage Fiscal Year Goal: 30%	

DROPPED MEMBERS	
DECEASED	2
CLUB CANCELLED	15
OTHER	180
TOTAL	197

[CLICK HERE FOR CUMULATIVE MEMBERSHIP DATA](#)

TOTAL FAMILY UNIT MEMBERS	1,406
FAMILY MEMBERS PAYING HALF DUES	734